

GREEN AUDIT REPORT

2018 -2023

PREPARED BY

IQAC AND ECO-CLUB

HIGHER AND TECHNICAL INSTITUTE MIZORAM (HATIM)

&

**THE DEPARTMENT OF ENVIRONMENT, FOREST
AND CLIMATE CHANGE, LUNGLEI
Government of Mizoram**

Content

1. Introduction

- 1.1 About the College
- 1.2 Vision statement of the college in line with the environment
- 1.3 Mission statement of the college in line with the environment

2. Target Area of Green Audit

- 2.1 Green Belt
- 2.2 Green Programme / Initiatives
- 2.3 Floral Diversity Analysis by the Department of Environment, Forest and Climate Change, Lunglei
- 2.4 Fauna Diversity Analysis by the Department of Environment, Forest and Climate Change, Lunglei

3. Reports and Recommendations

4. Audit Certificate

INTRODUCTION

1.1 About the college

The college sprawls over 30 acres of spacious greenery land in Kawmzawl, at 22.94°N and 92.76°E. It was founded in 2007, but was then located in the middle of Chanmari, surrounded by buildings and highways, in a densely populated town with no green campus. It then shifted to the present campus in the early year of 2019.

The college is an undergraduate degree college affiliated to Mizoram University established under the aegis of the Baptist Church of Mizoram (BCM) Serkawn, Lunglei. The college motto is '*Seek, Share, Serve*' which captures the essence of the institution's mission to educate the minds of youths, particularly those from Mizoram's southern region who do not have easy access to quality education, in the pursuit of knowledge, skills, and learning and enhance their potential. Its primary goal is to provide students with the skills necessary to become diligent and responsible members of society.

1.2 Vision statement of the College regarding the Environment

The vision of the college regarding the environment is as under:

- a) To be an institution of excellence that, in partnership with others, plays a significant role in the promotion of sustainable development through practical environmental education and sustainable development.

- b) The College is driven not only to provide excellent educational opportunities that are responsive to the needs of our students but also to empower them including meeting and exceeding challenges as active participants in sustaining, promoting, and shaping the future through a sustainable environment.

1.3 Mission statement of the College in line with the Environment

To achieve the vision goal, the college's objective is to impart awareness on sustainable environment in both formal and informal education through a variety of activities other than those currently included in the university's curriculum. Its purpose is to use education as a fundamental engine of change in demonstrating and advancing sustainable practices in and outside of the community through the ECO-CLUB, NSS, and other related committees or clubs. The college encourages individual and group activities that are ecologically responsible, economically feasible, and socially helpful.

TARGET AREA OF GREEN AUDIT

2.1 GREEN BELT:

Definition

A greenbelt is defined as a measure to prevent coastal erosion and reduce natural hazards by planting trees and creating forests along the coasts, aimed at protecting life, property, and embankments from tidal surges and other environmental impacts.

Green Belt in the institution

A green belt is maintained on campus to establish an invisible barrier that serves not only as a border surrounding the college campus but also at different areas within the campus. It is intended to limit rural sprawl while simultaneously encouraging biodiversity restoration. The inhabited area (built-up area) is 3.20 acres (13008 sq. mt), whereas the entire area covered by forest is 82 percent of the total 30 acres of land, or 24.60 acres of forest land with rich flora and fauna.

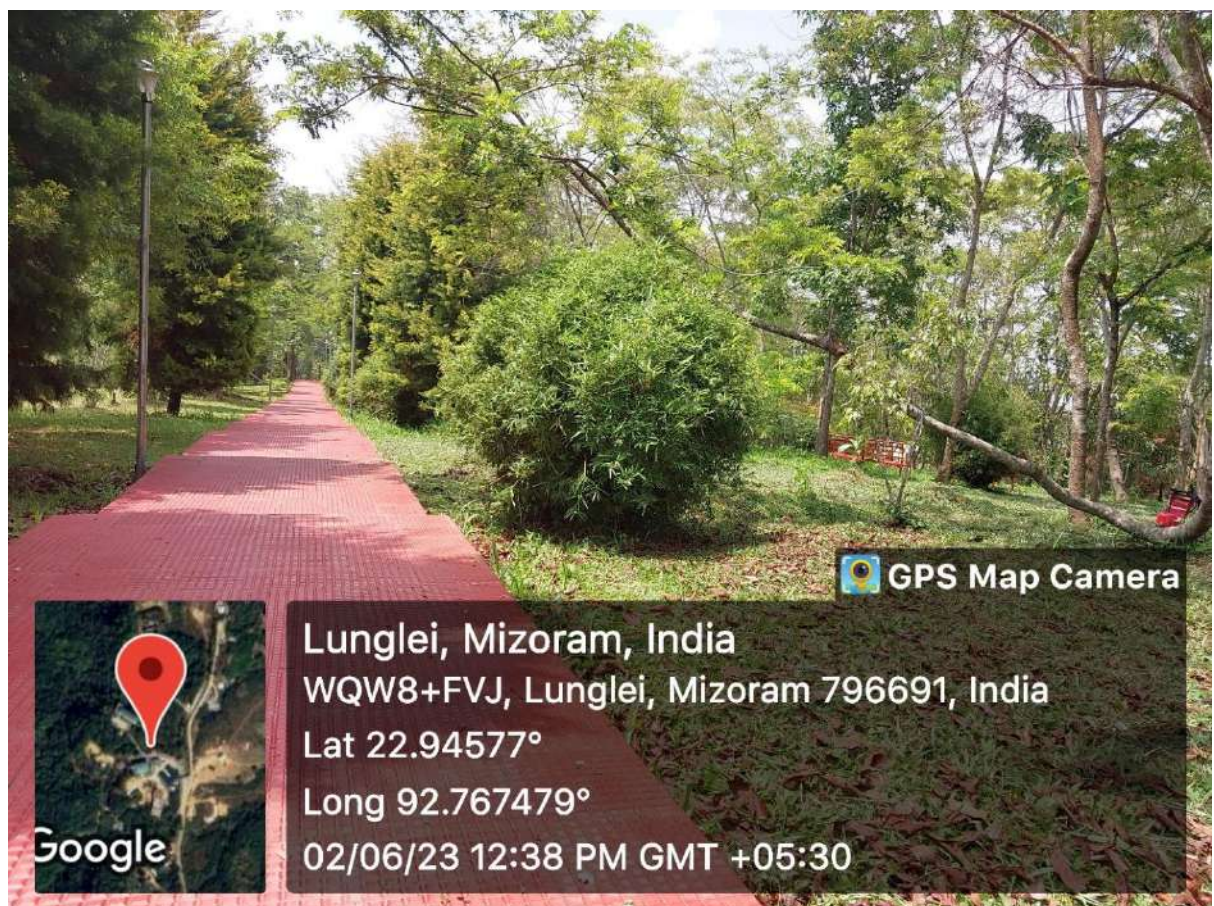
Green belt is also formed to reduce pollution on the campus, to absorb both gaseous and particulate pollutants which aims to maintain the ecological health of the institution. To develop a green belt on the campus, evergreen trees like Pine trees and semi-evergreen trees are planted along the road and pathways.



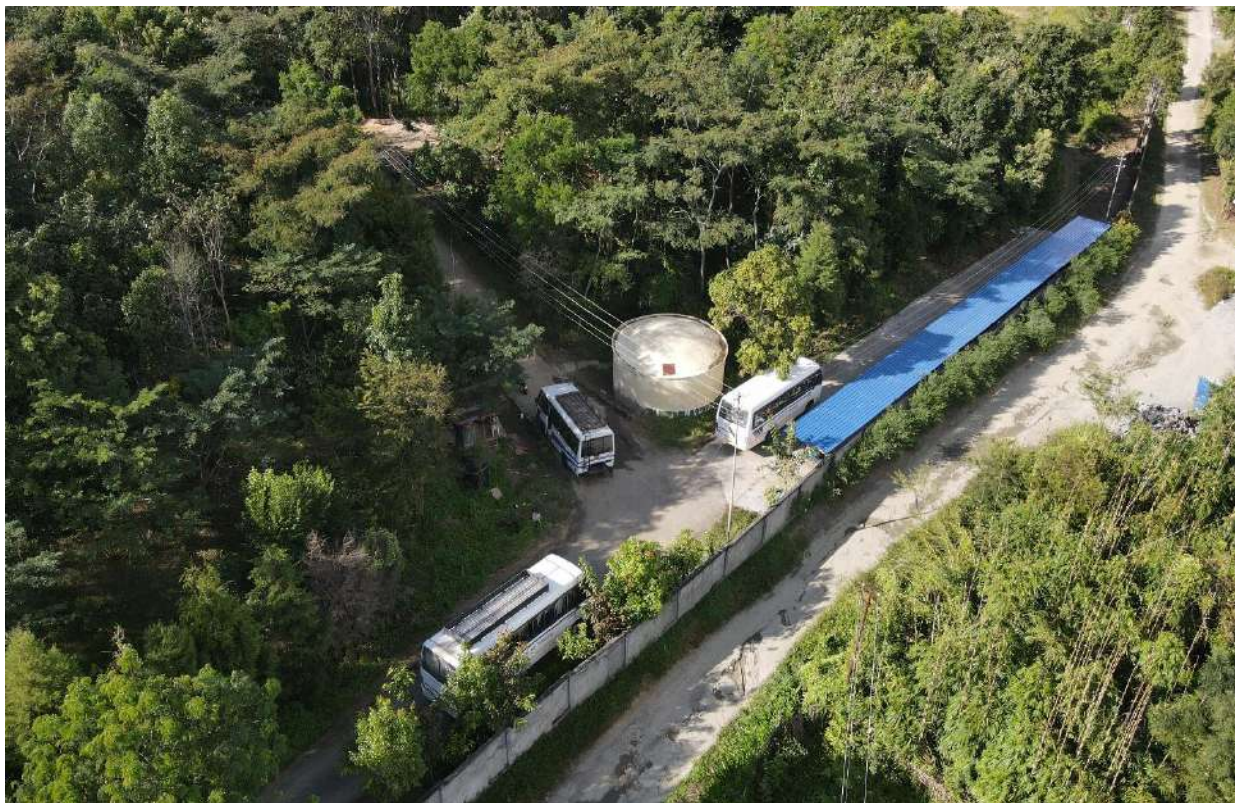
Google

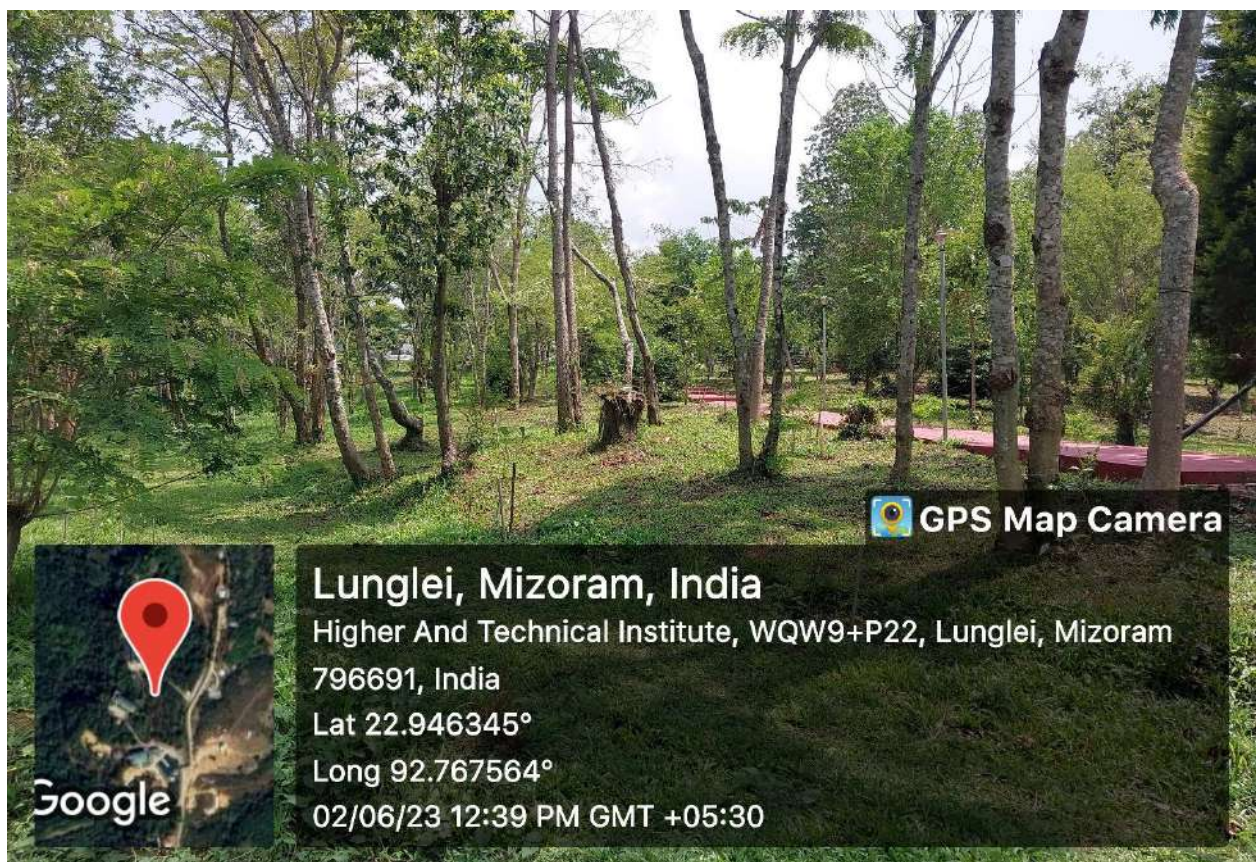
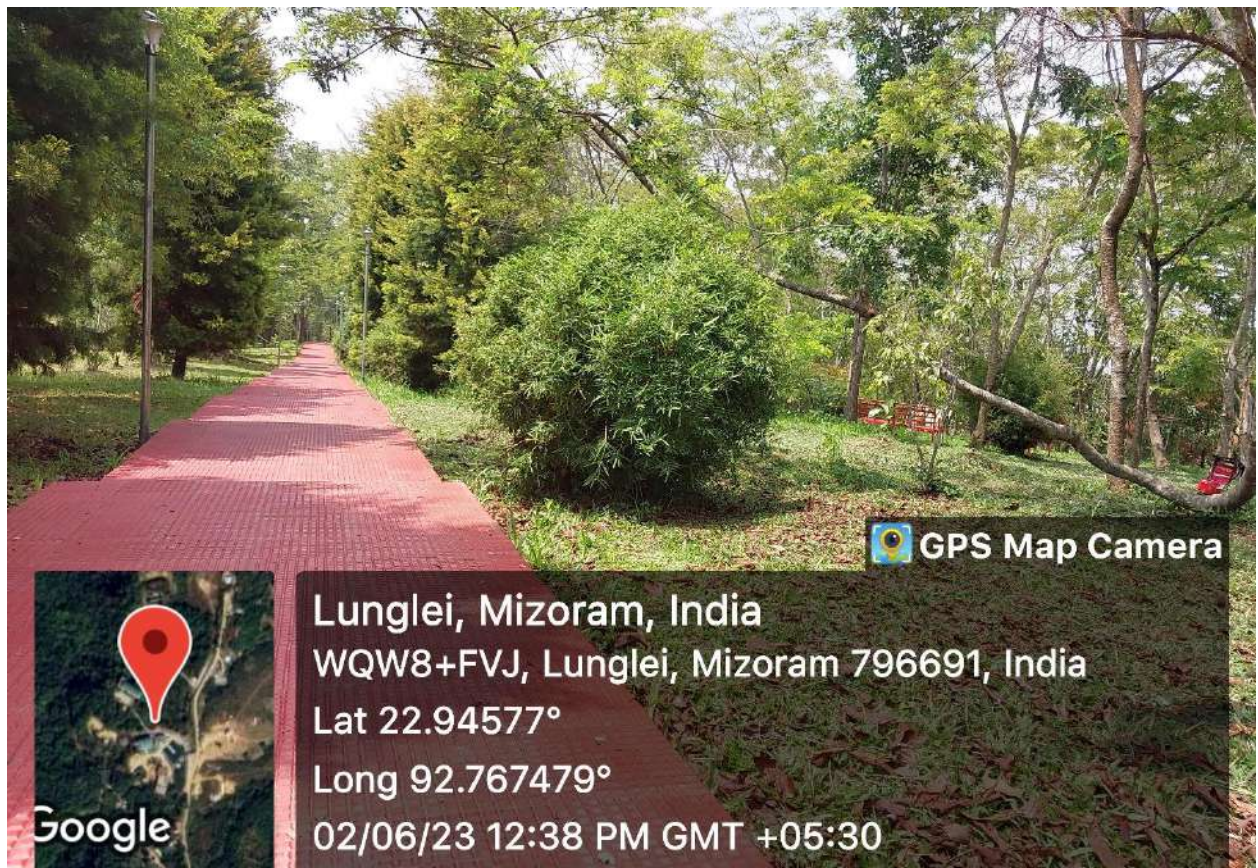
 GPS Map Camera

Lunglei, Mizoram, India
WQW8+FVJ, Lunglei, Mizoram 796691, India
Lat 22.945752°
Long 92.76751°
01/06/23 02:34 PM GMT +05:30












 GPS Map Camera



Lunglei, Mizoram, India
WQW8+FVJ, Lunglei, Mizoram 796691, India
Lat 22.945752°
Long 92.76751°
01/06/23 02:34 PM GMT +05:30



STATE TREE – “HERSE TREE” (Iron wood tree - *Messua ferrea*)

2.2 GREEN PROGRAMME / INITIATIVES:

The institution organises various environmental programs through various clubs and committees but mostly through its ECO-Club and NSS Unit. The following are mentioned worthy activities carried out during the last five years:

- a) **Awareness Program on Environment, Forests and Climate change in Mizoram** was held in the HATIM Auditorium on the **23rd March, 2018**. We have received informative speeches from Dr. C. Vidhyasagar, IFS and Er. Lalhmingmawia from Forest Department and PHE Department respectively.
- b) **Tree plantation** at Assam Rifle campus, Lunglei in collaboration with NYK. Lunglei on 14/07/2018
- c) **Tree plantation** at Ladies Hostel, HATIM where 20 saplings were planted on 21/07/2018.
- d) In the month of **July, 2019** HATIM Competed in AISHE Swachh Bharat and Enrolled to AISHE SMC (Social Media Champion), **Plantation** was done initiated by the **HATIM Unit NSS**.
- e) On **2nd November, 2019** on behalf of „**National Campaign on Tinospora Cardifolia**“, HATIM received **300 plants** from **State Ayush Department**.
- f) **15th April, 2021**, Mizoram State Medicinal Plants Board, **Directorate of Ayush**, Mizoram in collaboration of HATIM Organized **National Campaign On Tinospora Cardifolia (Giloe) “Amrita for Life”** in the HATIM Campus.
- g) Inaugural **Function of Green Mizoram Day 2021, Lunglei District held in HATIM Campus**. The inaugural function of Green Mizoram Day 2021, Lunglei District was held in HATIM Campus, Kawmzawl on the 11th June, 2021. The Hon'ble MLA & Vice Chairman, High Powered Committee, Lunglei District, Pu Lawmawma Tochwang, has graced the occasion as the Chief Guest. The programme was chaired by **Shri Kulothungan A, IAS, DC & Chairman, District Level Green Mizoram Committee, Lunglei District**. Reports were given by **Pi Lalrammawii Sailo, IFS, DFO & Member Secretary, District Level Green Mizoram Committee, Lunglei District**.

The institution focuses on supporting clubs and their activities, such as cleaning drives, planting projects, and environmental awareness campaigns. The institution also established an Eco Garden and NSS Park managed by ECO Club and NSS unit respectively. Faculty and students are encouraged to grow plants on campus, and the institution participates in various environmental events and observances such as Earth Day, World Environment Day, Green Mizoram Day, International Ozone Day, etc.

Display *boards with messages* such as no trash, no smoking, and a plastic-free campus are displayed. Different colour-coded rubbish containers are supplied in each campus block to separate waste and make collection easier.



Painting Competition organised by Eco-Club: HATIM
Theme "WILD LIFE CONSERVATION."



***Picture: Water Conservation (Mass Cleaning of Nghasih River
– Main source of Water for Lunglei)***



***Picture: Water Conservation (Mass Cleaning of Nghasih River
– Main source of Water for Lunglei)***



Picture: Water Conservation



Picture: Water Conservation



Picture: Cleanliness Drive



Picture: Cleanliness Drive



Picture: Inauguration of Single Use Plastic Free Campus.

2.3 Floral Diversity Analysis by the Department of Environment, Forest and Climate Change, Lunglei

The university has an eco-friendly campus with favourable topography, moderate rainfall, and climatic conditions, resulting in a high species variety on campus. The massive plantation drive on campus has resulted in a beautiful green campus with a complete canopy, attracting a diverse range of faunal species such as insects, birds, reptiles, and small animals.

The table below gives a picture of the Campus Lush Greenery area.

Summary	in Acres	%
Total Area of the campus	30.08	100%
Total Area covered with Forest	24.6	82%
Total Construction Area (Including internal Road)	2.28	18%
Built-Up Area (13008 sq. mt)	3.2	

82% of the campus is green, including various species such as trees, bushes, and plants. The college has developed the ECO garden and NSS Park, which showcase the campus's great floral variety, including diverse types of trees, plants, and bushes. The avenue trees along the road, as well as decorative plants along the campus route, contribute to the campus' great biodiversity.

The campus also has a planting of 300 *Tinospora cordifolia* saplings, which are medicinally essential. On November 2nd, 2019, on behalf of the National Campaign on Tinospora Cardifolia, HATIM received 300 saplings from the state Ayush Department that were planted, and an awareness campaign on the same plant as 'Amrita for Life' was organised in collaboration with the Mizoram State Medicinal Plants Board, Directorate of Ayush, Mizoram.

The list of flora in the campus is highlighted in the tables given below.

Table 1: List of Trees in HATIM Campus:

S.N	Local Name	Common Name	Botanical Name	Type
1	April par	May Flower	<i>Delonix regia</i>	Deciduous
2	Ashoka Tree	Ashoka Tree	<i>Saraca asoca</i>	Evergreen
3	Batling	Wendlandia grandis	<i>Wendlandia budleioides</i>	Evergreen
4	Bianghrei	NA	<i>Dalbergia obtusifolia</i>	Evergreen
5	Bil	Indian Red Pear/Murtenga	<i>Protium serratum</i>	Evergreen
6	Bung	Indian Laurel Fig	<i>Ficus retusa</i>	Deciduous
7	Butter Fruit	Avocado	<i>Persea americana</i>	Evergreen
8	Chawmzil	Wild Privet	<i>Ligustrum robustum</i>	Evergreen
9	Chawnpui	Queen's Flower	<i>Lagerstroemia speciosa</i>	Deciduous
10	Chengkek	Garcinia lanceifolia	<i>Garcinia lanceifolia</i>	Evergreen
11	Chhimhruk	Rhus succedanea	<i>Toxicodendron succedaneum</i>	Deciduous
12	Curry Patta	Curry Patta	<i>Murraya koenigii</i>	Deciduous
13	Fah	Spike Oak	<i>Lithocarpus dealbatus</i>	Evergreen
14	Far	Khasi pine	<i>Pinus kesiya</i>	Evergreen
15	Far zarmawi	Christmas Tree	<i>Araucaria cookii</i>	Evergreen
16	Fartuah	Indian Coral Tree	<i>Erythrina stricta</i>	Deciduous
17	Herhse	Iron wood tree	<i>Messua ferrea</i>	Evergreen
18	Hmarhleng	NA	<i>Styrax Serrulatum</i>	Evergreen
19	Hmawng	Indian Rubber	<i>Ficus elastica</i>	Evergreen
20	Hmawng hnahsin / Hmawngkeza / Hmawngpui	Putkal / Geniculate fig	<i>Ficus geniculata</i>	Evergreen
21	Hnahkhar (Khar Nu)	Papri	<i>Macaranga indica</i>	Evergreen
22	Hnahkiah	NA	<i>Callicarpa arborea</i>	Evergreen
23	Hnahthak	NA	<i>Piper diffusum</i>	Evergreen

24	Kangtek	Gmelina arborea	<i>Gmelina arborea</i>	Evergreen
25	Kawhtebel	Marking Nut Tree	<i>Semecarpus anacardium</i>	Deciduous
26	Kawiam (Kawlthei)	Guava	<i>Psidium guajava</i>	Evergreen
27	Kelbuh	Araliaceae	<i>Schefflera vehulosa</i>	Deciduous
28	Khaukhim	Bonfire tree/Scarlet Sterculia	<i>Firminia/Sterculia colorata</i>	Evergreen
29	Khaupui	Hairy Sterculia/Udal	<i>Sterculia villosa</i>	Deciduous
30	Khawmhma	Chinese Sumac/Nutgall tree	<i>Rhus chinensis</i>	Deciduous
31	Khiang	Needle wood	<i>Schima wallichii</i>	Evergreen
32	Khuangthli	Bishop wood	<i>Bischofia javanica</i>	Evergreen
33	Lachu / Litchi	Litchi	<i>Litchi chinensis</i>	Evergreen
34	Lalruanga dawi bur	Bandolier fruit	<i>Zanonia indica</i>	Evergreen
35	Lau (Lamkhuang)	Jack fruit	<i>Artocarpus heterophylla</i>	Evergreen
36	Lenhmui	Trumpet Satinash	<i>Syzygium claviflorum</i>	Evergreen
37	Lungkhup	Yellow Teak	<i>Haldina cordifolia</i>	Deciduous
38	Makpazangkang	Pink and White Shower	<i>Cassia nodosa</i>	Evergreen
39	Neem	Neem tree	<i>Azardachta indica</i>	Semi-evergreen
40	Nganbawm	Pink Cedar / Mundani /Shingle tree	<i>Acrocarpus fraxinifolius</i>	Deciduous
41	Ngiau	Champ	<i>Michelia oblonga</i>	Evergreen
42	Pang	Cotton Tree	<i>Bombax insigne</i>	Deciduous
43	Pangkai	Bhooby Tree	<i>Baccaurea ramiflora</i>	Evergreen
44	Pear	Pear	<i>Pyrus communis</i>	Evergreen
45	Rihnim (hnahtial)	Sacred Fig	<i>Ficus retusa</i>	Evergreen
46	Rihnim hnah sin	Sacred Fig	<i>Ficus retusa</i>	Evergreen
47	Rubber Kung	Rubber Tree	<i>Hevea brasiliensis</i>	Evergreen
48	Sernam	Cubeba	<i>Litsea cubeba</i>	Deciduous
49	Serthlum	Orange Tree	<i>Citrus sinensis</i>	Evergreen
50	Sihneh	NA	<i>Eurya acuminata</i>	Evergreen

51	Sunhlu	Indian Gooseberry	<i>Phyllanthus emblica</i>	Deciduous
52	Taitaw/Tawitaw	Hog plum tree	<i>Spondias pinnata</i>	Deciduous
53	Teak	Teak	<i>Tectona grandis</i>	Deciduous
54	Tei	Red Cedar	<i>Toona ciliata</i>	Deciduous
55	Tengtere	Tamarind	<i>Tamarindus indica</i>	Evergreen
56	Tespatta	Bay leaf	<i>Cinnamomum tamala</i>	Evergreen
57	Thakthing	Cinnamon	<i>Cinnamomum verum</i>	Evergreen
58	Theihai	Mango tree	<i>Mangifera indica</i>	Evergreen
59	Theiherawt	Carambola -tree	<i>Averrhoa carambola</i>	Evergreen
60	Theipui	Drooping fig	<i>Ficus semicordata</i>	Evergreen
61	Theiria	Corkwood	<i>Carallia brachiata</i>	Evergreen
62	Theitat	Monkey Jack	<i>Artocarpus lakoocha</i>	Deciduous
63	Thingkha	NA	<i>Derris robusta</i>	Deciduous
64	Thingpawnnchhia	Velvety melon Feather Foil	<i>Glochiodion heyneanum</i>	Evergreen
65	Thingri	Fragrant Albizia/Black Siris	<i>Albizia odoratissima</i>	Evergreen
66	Thingsia	Chestnut Wild Himalayan	<i>Castanopsis tribuloides</i>	Evergreen
67	Vawmbuh	NA	<i>Castanopsis lanceifolia</i>	Evergreen
68	Thingthiang	Widow leaved olive tree	<i>Olea salicifolia</i>	Evergreen
69	Thingthiang suak	NA	<i>Olea sp.</i>	Evergreen
70	Thingthupui	NA	<i>Dysoxylum excelsum</i>	Deciduous
71	Thingvawkpui	Mouse Deer	<i>Balakata baccata</i>	Evergreen
72	Thlanvawng	Beech wood	<i>Gmelina arborea</i>	Deciduous
73	Tlaizawng	Cherry	<i>Prunus cerasoides</i>	Deciduous
74	Tufar	Griffith's Plum Yew	<i>Cephalotaxus graffiithiii</i>	Deciduous
75	Tum	Palm Tree	<i>Caryota urens</i>	Evergreen
76	Umkhal/Kumkhal	NA	<i>Eleocarpus tectorius</i>	Evergreen
77	Vakep	Tropical Dogwood	<i>Mussaendra glabra</i>	Evergreen
78	Vang	Chinese Albizia	<i>Albizia chinensis</i>	Deciduous

79	Vaube	Mountain Ebony	<i>Bauhinia variegata</i>	Deciduous
80	Zairum	Yon	<i>Anogeissus acuminata</i>	Deciduous
81	Zawng Taitaw	NA	<i>Spondia sp.</i>	Deciduous
82	Zawngtah	Tree Bean	<i>Parkia roxburghii</i>	Deciduous
83	Zuang	Duabanga	<i>Duabanga grandiflora</i>	Deciduous
84	Chimchawk	NA	<i>Aralia foliosa</i>	Evergreen

Table 2: List of climbers, shrubs, grass and herbs in HATIM Campus

S.N	Local Name	Common Name	Botanical Name	Habit
1	Aidu	Java cardamon	<i>Amomum maximum</i>	Herb
2	Anhling	Black nightshade	<i>Solanum nigrum</i>	Shrub
3	Bahkhawr	Wild coriander	<i>Eryngium foetidum</i>	Herb
4	Bahra (Ram Bahra)	NA	<i>Dioscorea spp</i>	Herb
5	Balhla	Banana	<i>Musa acuminata</i>	Herb
6	Buar	Fleabane	<i>Conyza leucantha</i>	Herb
7	Builukham	Malabar Blackmouth	<i>Melastoma malabathricum</i>	Shrub
8	Chabet	Common Cocklebur	<i>Xanthium strumarium</i>	Herb
9	Chakawk	Vegetable Fern	<i>Diplazium esculentum</i>	Herb
10	Changel	NA	<i>Musa sp.</i>	Shrub
11	Chengkek	NA	<i>Garcinia lanceifolia</i>	Shrub
12	Dawl	Taro	<i>Calocasia esculata</i>	Herb
13	Derhken	African Marigold	<i>Tagetes erecta</i>	Herb
14	Di	Blady Grass	<i>Imperata cylindrica</i>	Grass
15	Hlo nuar	Touch- me -not	<i>Mimosa pudica</i>	Shrub
16	Hmarchapui	Chilli	<i>Capscicum frutesens</i>	Shrub
17	Hmarchate	Red Pepper	<i>Capscicum annum</i>	Shrub

18	Hmunphiah	Broom Grass	<i>Thysanolaena maxima</i>	Grass
19	Hnahbial	Indian Pennywort	<i>Centella asiatica</i>	Herb
20	Hnahthial	Arrowroot	<i>Maranta arundinaceae</i>	Herb
21	Hruivankai	Moonseed	<i>Tinospora cordifolia</i>	Climber
22	Japan hlo	Bitter Vine	<i>Mikania micrantha</i>	Climber
23	Kangthai	Himalayan Nettle	<i>Girardinia diversioflora</i>	Shrub
24	Kawldai	Malabar Nut	<i>Justica adhatoda</i>	Shrub
25	Kelbe an	Broad Leaf Plantain	<i>Plantago major</i>	Herb
26	Kelte bengbeh	Wax Flower	<i>Tabernaemontana divaricata</i>	Shrub
27	Luang	NA	<i>Saccharum longisetosum</i>	Herb
28	Maitam tawk	Spiny bitter cucumber	<i>Momordica cochinchinensis</i>	Herb
29	Midum pangpar	China Rose	<i>Hibiscus rosa sinensis</i>	Shrub
30	Nauban	Orchid	<i>Dendrobiumformosum</i>	Herb
31	Nauban	Orchid	<i>Dendrobium aggregatum</i>	Herb
32	Pelh	Joint Fir	<i>Gnetum gnemone</i>	Shrub
33	Phaiphek	Palm grass	<i>Curculigo grassifolia</i>	Shrub
34	Phuihnam	Bridal Veil	<i>Clerodendrum wallichii</i>	Shrub
35	Phul	Love Grass	<i>Chrysopogon aciculatus</i>	Grass
36	Runhmui	Wild Basil	<i>Ocimum americanum</i>	Herb
37	Sairil	Climbing pear bamboo / Tight flowered scrambling bamboo	<i>Melocalamus compactiflora</i>	Shrub
38	Saron	Bougainvillea	<i>Bougainvilleae spectabilis</i>	Shrub
39	Sekhupthur	NA	<i>Begonia dioica</i>	Herb
40	Sialinuchhu	NA	<i>Rubus birmanicus</i>	Shrub
41	Sumbul	Crepe Ginger	<i>Cheilocostus speciosus</i>	Herb
42	Tawkpui	Turkey Berry	<i>Solanum rudepannum</i>	Shrub
43	Tawkte	Indian Night shade	<i>Solanum anguivi</i>	Shrub
44	Telhawng	Tuber	<i>Aristema cpeciosum</i>	Herb

45	Thakpui	Devil Nettle	<i>Dendrocnide sinuata</i>	Shrub
46	Thangtung	Palm	<i>Arenga saccharifera</i>	Shrub
47	Thilte (Changdam)	Palm	<i>Calamus guruba</i>	Shrub
48	Tlamsam	Christmas Bush	<i>Chromolaena odorata</i>	Shrub
49	Vakep	Tropical Dogwood	<i>Mussaendra glabra</i>	Shrub
50	Vawihuih hrui	Skunk Vine	<i>Paederia foetida</i>	Climber
51	Vawkpuithal	Spanish Needle	<i>Bidens pilosa</i>	Herb
52	Phulrua	Rhino bamboo	<i>Dendrocalamus halmiltonii</i>	Grass
53	Rawnal	NA	<i>Dendrocalamus hookeri</i>	Grass
54	Mautak	Muli bamboo	<i>Melocanna baccifera</i>	Grass
55	Rawthing	Mahal bamboo	<i>Bambusa longispiculata</i>	Grass
56	Zawngaleilawn/ Zawngaleilak	Snake Climber	<i>Bauhinia anguina</i>	Climber
57	Kawihrui	Matchbox bean/St. Thomas bean/ Ghila	<i>Entada scandens</i>	Climber
58	Rulei/Ruzâl	NA	<i>Millettia pachycarpa</i>	Climber
59	Sarzukpui	Oleaster/Wild Olive	<i>Elaeagnus caudata</i>	Shrub

2.4 Fauna Diversity Analysis by the Department of Environment, Forest and Climate Change, Lunglei

HATIM is located in Lunglei District, Mizoram. It lies in the central part of Mizoram and is 175 km away from the State capital city of Aizawl. Lunglei is located 22.9230° N, 92.6677° E. It has an elevation of 729 metres (2,392 feet) above sea level and is situated on a ridge surrounded by hills. It has annual high temperature of 30.64°C (87.15°F) and annual low temperature of 16.24°C (61.23°F). the college has a lush green campus housing a wide variety of floral and faunal species.

Despite its modest size, the college campus hosts a diverse range of mammals and birds, demonstrating the institution's great biodiversity. The many bird and animal species contribute to the campus's great biodiversity and play a vital role in the ecosystem.

List of faunal species found in the campus are listed in **Table 3** and **Table 4**.

These lists are based on the study carried out by the students and residents of the campus in hostel and the forest department, Lunglei district.

Table 3: List of Wild Animals in HATIM Campus			
S.N	Local Name	Common Name	Scientific Name
1	Awr-rang	Malayan Giant Squirrel	<i>Ratufa bicolour</i>
2	Bak	Insectivorous bats	<i>Myotis formosus</i>
3	Bui-pui	Red-checked Bamboo Rat	<i>Rhizomys erythrogenys</i>
4	Aifiar	Crab	Gecarcinucidae sp.
5	Aikam	Crab	<i>Potamidae sp.</i>
6	Chepa	Northern Tree Shrew	<i>Tupaia belangeri</i>
7	Chhimtir	Grey Musk Shrew	<i>Suncus murinus</i>
8	Hlaivar	Copperheaded trinket snake	<i>Coelognathus radiatus</i>
9	Hlaivawm	Indian Rat Snake	<i>Ptyas mucosa</i>
10	Hleikapsen	Red Bellied Palla`s Squirrel	<i>Callosciurus erythraeus</i>
11	Hleilubial	Orange-bellied Himalayan Squirrel	<i>Dremomys lokriah</i>
12	Rul Sakhi	Tawny Cat Snake	<i>Boiga ochracea</i>
13	Rulhlai	Green trinket snake	<i>Gonyosoma prasinum</i>
14	Rulnghawngsen	Red-necked Keelback	<i>Rhabdophis subminiatus</i>
15	Rultuha	Bamboo pit-viper	<i>Trimeresurus popeorum</i>

16	Sanghar	Leopard Cat	<i>Felis bengalensis</i>
17	Sazaw (Zawbuang)	Himalayan Palm Civet	<i>Paguma larvata</i>
18	Sazaw (Zawhang)	Toddy Cat	<i>Paradoxurus hermaphrodites</i>
19	Sazu	House Rat/Black rat	<i>Rattus rattus</i>
20	Sihal	Jackal	<i>Canis aureus</i>
21	Tangkawng/Tangkeu	Bengal Monitor Lizard	<i>Varanus bengalensis</i>
22	Tlumpui	Large Indian Civet	<i>Viverra indica</i>
23	Tlumther	Small Indian Civet	<i>Viverricula indica</i>
24	Uleuh	Blanford's Flying Lizard	<i>Draco blanfordii</i>
25	Awke/Chawke	Tokay gecko	<i>Gekko gecko</i>
26	Changpât	Earthworm	<i>Metaphire houlleti</i>
27	Uṭawk	Frog	<i>Duttaphrynus melanostictus</i>
28	Chungu	Frog	<i>Euphlyctis kalasgramensis</i>
29	Uchhawhring	Frog	<i>Zhangixalus smaragdinus</i>
30	Uifawm	Frog	<i>Hierodula sp.</i>
31	Dawngthlek	Frog	<i>Chiromantus vittatus</i>
32	Usai/Ukei/Usial	Frog	<i>Hoplobatrachus tigerinus</i>
33	Usai/Ukei/Usial	Frog	<i>Hoplobatrachus litoralis</i>
34	Usial/Lengkir uchang	Frog	<i>Amolops indoburmanensis</i>
35	Usial thla nei/Uthlawk/Uhlap	Frog	<i>Pterorana khare</i>
36	Changtuk	Frog	<i>Hydrophylax leptoglossa</i>
37	Utereng	Frog	<i>Sylvirana lacrima</i>
38	Changban	Frog	<i>Polypedates teraiensis</i>
39	Uchhawhring	Frog	<i>Zhangixalus smaragdinus</i>
40	Perhpawng	Field-Cricket	<i>Gryllus Campestris</i>

Table 4: List of Birds in HATIM Campus

S.N	Local Name	Common Name	Scientific Name
1	Bawng	Short billed Minivet	<i>Pericrocotus brevirostris</i>
2	Changkak	North Indian Black Drongo	<i>Dicrurus adsimilis albiricus</i>
3	Chawngzawng	House Sparrow	<i>Passer domesticus</i>
4	Chhawl-hring	Golden-fronted leafbird	<i>Chloropsis aurifrons</i>
5	Chhem-hur	Brown Shrike	<i>Lanius cristatus</i>
6	Chhuangtuar/Vaseek	Eurasian hoopoe	<i>Upupa epops</i>
7	Chip	Indian Tree Pipit	<i>Anthus hogdsoni</i>
8	Choak	Jungle Crow	<i>Corvus macrorhynchos</i>
9	Daikat	Common Tailor Bird	<i>Orthotomus sutorius</i>
10	Ki-reuh	Streaked Spiderhunter	<i>Arachnothera longirosta</i>
11	Lalruangasehnawt	Great Coucal	<i>Centropus sinensis</i>
12	Mitval	Nepal Fulveta	<i>Alcippe nipalensis</i>
13	Mitval	Indian White eye	<i>Zosterops palbrebosa</i>
14	Mute	Eurasian Kestrel	<i>Falco tinnunculus</i>
15	Ramar	Red Jungle Fowl	<i>Gallus gallus</i>
16	Ramparva	Emerald Dove	<i>Chalcophaps indica</i>
17	Tektek	Plain Flowerpecker	<i>Dicaeum concolor</i>
18	Thangfen	Indian cuckoo	<i>Cuculus micropterus</i>
19	Thehlei	Pallas's Squirrel	<i>Callosciurus erythraeus Pallas</i>
20	Tlaiberh	Red-vented bulbul	<i>Pycnonotus cafer</i>
21	Tukkhumvilik	Blackcrested	<i>Pycnonotus melanicterus</i>
22	Tuklo	Blue-throated Barbet	<i>Megalaima asiatica</i>
23	Vahmim	Blue breasted Quail	<i>Coturnix chinensis</i>
24	Vahrit	Crestless fireback	<i>Lophura leucomelanos athami</i>
25	Vainronghak	Blue Rock-thrush	<i>Monticola solitaries</i>

26	Vakul	Greater Racket-tailed Drongo	<i>Dicrurus paradiseus</i>
27	Valambawk	Grey Nightjar	<i>Caprimulgus indicus</i>
28	Vamur	Red rumped Swallow	<i>Hirundo daurica</i>
29	Vate	Bush-warbler	<i>Cettia fortipes</i>
30	Vazar (Zarpui Thi awrh)	Greater Necklaced Laughingthrush	<i>Pterorhinus pectoralis</i>



Picture: Chhuangtuar/Vaseek (Eurasian hoopoe)



Picture: Aikam (Crab) & Bird Nest



Picture: Awke/Chawke (Tokay gecko)



Picture: Indian Nightjar Caprimulgus asiaticus



Picture: Honey Comb & Crab



Picture: Rulnghawngsen (Red-necked Keelback)



Picture: Perhpawng (Field-Cricket)



Picture: Uleuh (Blanford's Flying Lizard)



Picture: Vazar (Greater Necklaced Laughingthrush)



Picture: Laiking (Lizard)



Picture: Rulvankai (Dendrelaphis sp)

3. REPORT AND RECOMMENDATIONS:

The Higher and Technical Institute of Mizoram (HATIM) has conducted a comprehensive evaluation of its Green Audit and Environmental indicators. Despite facing challenges, HATIM has effectively managed its environmental impact and made progress. However, there are opportunities for improvement in various areas of management. It is recommended that HATIM implements a basic environmental management system, develops frameworks and monitors action plans to further enhance its environmental performance.

The Green Audit reports and Environmental Audit reports may assist the institution in the process of attaining an eco-friendly approach to sustainable development further. It will serve as an opportunity to improve and develop innovative practices. Noteworthy practices and few recommendations are added which may lead to the prosperous future in context to Green Campus, sustainable environment and community development.

Noteworthy Practices:

- (a) The institution is a single-use plastic free zone.
- (b) Segregation of waste and its management is good. Use of designated bins for waste disposal.
- (c) Construction of rainwater harvesting is noteworthy
- (d) Good parking area available for staff and students.
- (e) No smoking zones
- (f) All offices are well decorated with house plants such as Snake Plant (*Dracaena trifasciata*) which is good for purifying the air.
- (g) 40% of Street lamp in the campus use solar energy.
- (h) Promotion of a clean culture.

Recommendations:

- (a) Fire Safety instruments should be installed in all the buildings
- (b) Wastewater management has to be properly developed and implemented on campus.
- (c) Optimisation of energy using solar panels.
- (d) All the public lights (Street Lamp) within the campus may be run with solar panels
- (e) More evergreen tree should be planted in and around the administrative building, amphitheatre and cafeteria.
- (f) Develop a framework and management system for recycling.

Auditors and Surveyors from the Department of Environment, Forest and Climate Change:

- 1. H. Lalngheta, Forester
- 2. A Darchawia, Forest Guard
- 3. B. Lalchhuanawma, Nursery Caretaker
- 4. H. Lalbeiseii, Range Office Staff


Dr. John C Laldusaka
IQAC, Coordinator

Coordinator
IQAC, HATIM
Lunglei


28/6/23
(PC LALCHHANDAMA)
Divisional Forest Officer
Lunglei Forest Division
Divisional Forest Officer
Lunglei Forest Division
Lunglei, Mizoram

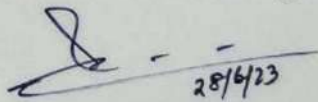
CERTIFICATE

This is to certify that
HIGHER AND TECHNICAL INSTITUTE, MIZORAM (HATIM)
has conducted **Green Audit** for the academic session **2022-2023**
to assess the activities taken up by the institution towards
improvement of environment.

The activities taken up by the institution for creation of better / greener
environment were highly appreciated. It is expected that those efforts
will bear fruitful results for the institution and its surroundings
for years to come.

Date: 28.06.2023




28/6/23
(PC LALCHHANDAMA)
Divisional Forest Officer
Lunglei Forest Division
Lunglei Forest Officer
Lunglei Forest Division
Lunglei, Mizoram